



## Vehicle registration & licensing

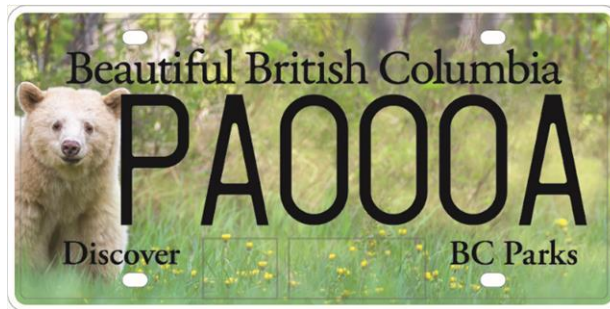
### New number plates featuring BC Parks

New scenic number plates may be displayed on passenger vehicles, motor homes, vans and light trucks, starting January 29, 2017.

#### Appearance and sequence

Motorists can select from among three pairs of scenic number plate backgrounds:

**Kermode bear**



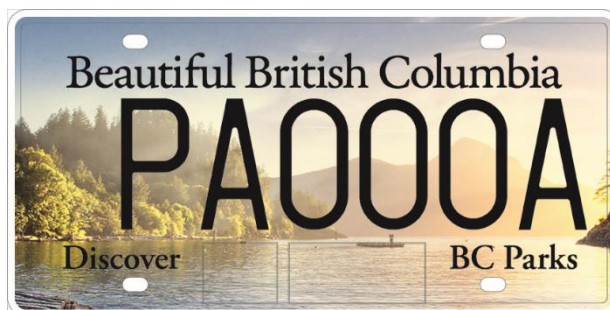
Characters range from  
PA000A – PJ999X

**Purcell  
Mountains**



Characters range from  
PK000A – PV999X

**Porteau Cove**



Characters range from  
PW000A – RG999X

The same 2-letter, 3-number, 1-letter alphanumeric character format (AA###A) applies to all vehicles that display the new plates, including passenger vehicles and light commercial vehicles.

BC Parks number plates that are displayed on commercial vehicles will **not** have the 4-number, 2-letter character format of a regular commercial vehicle number plate.



## Visibility

B.C. is using high-definition retro-reflective background sheeting for these new BC Parks plates. This improves the readability of the plates, especially at night.

## Purpose

The new BC Parks number plates give B.C. motorists an attractive opportunity to show their support for BC Parks. The plates are available for an additional and annual fee. The net fee proceeds are dedicated to the provincial Park Enhancement Fund.

## Eligibility and applicability

BC Parks plates may be issued for display on most passenger vehicles, motorhomes, and qualifying commercial vehicles with licensed gross vehicle weight (GVW) of 5,500 kg and less.

The number plates are not issued to motorcycles, commercial vehicles over 5,500 kg GVW, trailers, farm vehicles, off-road vehicles, vehicles normally displaying a "Restricted" number plate or operating pursuant to a conditional licence (e.g. used exclusively for fire protection purposes.)

Personalized number plate character combinations are not applicable to BC Parks number plates.

## Souvenirs

If a motorist cancels their set of BC Parks number plates, they may retain one of the plates as a souvenir. The retained souvenir number plate is not for display on a vehicle.

## Legislation and regulations

*Commercial Transport Act* [Section 4 & 5](#) – *Motor Vehicle Act* provisions & Motor vehicle regulations  
*Motor Vehicle Act* [Section 12](#) – Number plates  
*Motor Vehicle Act Regulations* [Division 3](#) – Display and Use of Number Plates  
*Motor Vehicle Act Regulations* [Division 24](#) – Vehicles of unusual size, weight or operating characteristics  
*Motor Vehicle Fees Regulation* [Item 14](#) – BC Parks Number Plate fees  
*Commercial Transport Fees Regulation* [Item 3\(c\)](#) – BC Parks Number Plate fees

## Contact

For more information, contact Rob Miller, Policy Advisor  
Vehicle Registration Policy and Programs  
250-414-7907 or email [rob.miller@icbc.com](mailto:rob.miller@icbc.com)

**Manager, Driver and Vehicle Licensing**  
**ICBC**



### *Distribution list*

#### **B.C. Ministry of Environment**

Conservation Officer Service (Chief C.O.)

#### **B.C. Ministry of Forests, Lands and Natural Resource Operations**

Compliance and Enforcement Branch  
(Director)

Land Tenures Branch (Manager responsible for ORVs)

#### **B.C. Ministry of Public Safety and Solicitor General**

CPPO (Directors of Policy & Legislation and Corporate Initiatives)

Police Services Division, Road Safety Unit  
(Director)

RoadSafetyBC, Policy Unit (Director)

#### **B.C. Ministry of Transportation and Infrastructure**

CVSE (Director)

CVSE (Deputy Director)

Provincial Permit Centre (Manager)

Transportation Policy & Programs Dept.  
(Exec. Director)

Transportation Policy Branch (Manager)

#### **Canadian Border Services Agency**

#### **Law Enforcement**

BC Association of Chiefs of Police

Municipal Police forces

PRIME-BC

RCMP "E" Division, Traffic Services (Officer in Charge)

RCMP, Lower Mainland District Traffic Services (Officer in Charge)

#### **Other Jurisdictions**

Canadian Council of Motor Transport Authorities (CCMTA)

American Association of Motor Transport Authorities (AAMVA)

#### **Registrar of Imported Vehicles**

RIV Policy, Standards & Enforcement  
(Compliance Manager)

#### **Transport Canada**

Motor Vehicle Regulation Enforcement  
(Director)

Road Safety and Motor Vehicle Regulation  
(Director General)

#### **ICBC**

Business Education - Insurance

Claims Services (Personal & Commercial)

Commercial Insurance / CUS & GU

Communications, SE & Road Safety

Driver Licensing Policy & Standards

Insurance & DL Contact Centre / BEU / Ins.

Op Support / Ins. Procedures & Bus. Change

Insurance Product Services

Insurance Sales & Distribution

Insurance Strategy & Pricing

Insurance Underwriting

Procurement Operations

Vehicle Registration Programs / Specialty

Vehicle Registration Services